

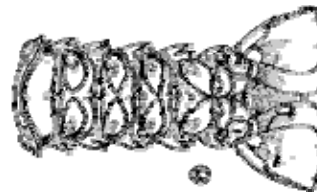
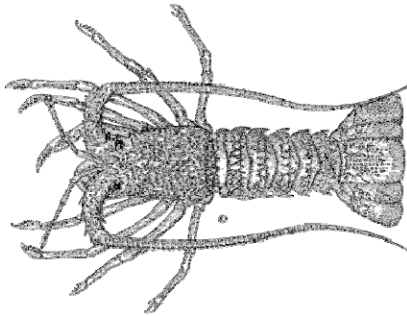


Unit 2A, Level 1, 517 Mt Wellington Highway, Mt Wellington, AUCKLAND. P O Box 73-087, Auckland International Airport, Auckland, New Zealand. Telephone 0-9-573-2625, Facsimile 0-9-573-2620, E-mail sales@lbtaspac.co.nz Website: www.lbtaspac.co.nz

LOBSTER



COMMON NAME: New Zealand Rock Lobster
LATIN NAME: *Jasus edwardsii*
PROCESSED STATE: Live
 Frozen Tails



GRADING – LIVE LOBSTER:

GRADE	WEIGHT
A	400 – 600 grams
B	600 – 800 grams
C	800 – 1000 grams
D	1000 – 1500 grams
E-	1500 – 2000 grams
E+	2000 – 2500 grams
F	2500+ grams

GRADING FOR LOBSTER TAILS:

GRADE	WEIGHT/TAIL	COUNT
A	4 – 6 ounces	80-54 pcs
B	6 – 8 ounces	54-40 pcs
C	8 – 10 ounces	40-32 pcs
D	10 – 12 ounces	32-27 pcs
E	12 – 16 ounces	27-20 pcs
F	16 – 20 ounces	20-16 pcs
G	20 – 24 ounces	16-14 pcs
H	24 – 32 ounces	14-10 pcs
I	Over 32 ounces	10 or less

NETT WEIGHT PER CARTON:

10.5kgs approx. per carton

20lb approx. per carton

